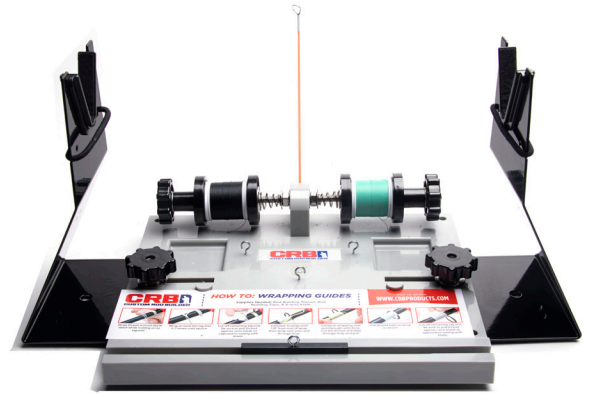


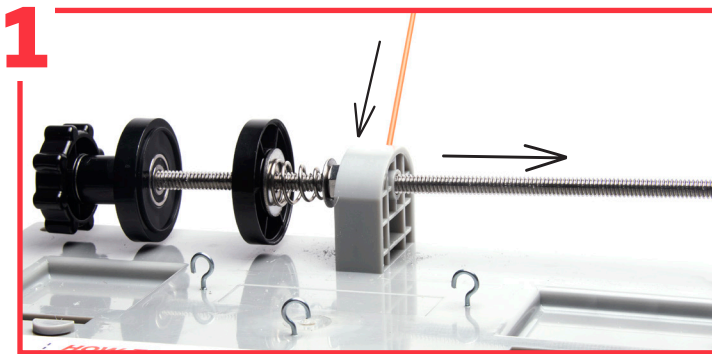
AHWS-1 2-SPOOL THREAD CARRIAGE INSTALLATION

This Advanced Hand Wrapper System is a standalone wrapper that provides an upgraded sturdy base and two securely fastened stands with handy precision knobs for quick adjustments—plus, multiple new add-ons to truly enhance your hand wrapping experience.

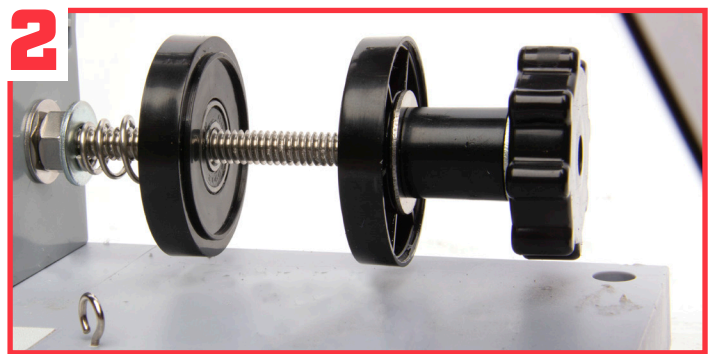
The base also includes two convenient insets to keep any guides, tip tops, and tools like guide tubing, razor blades, and more accessible from the first wrap to the last!



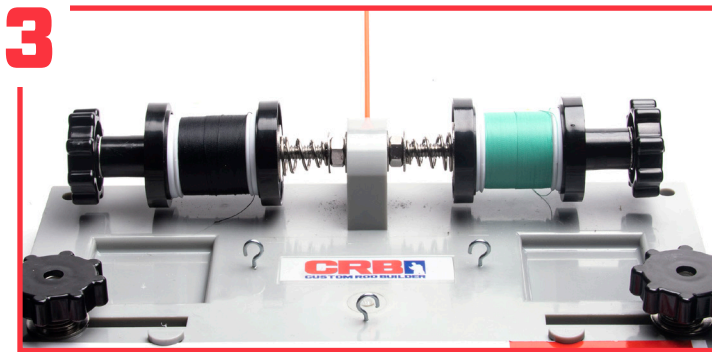
ASSEMBLY AND USE



1 Start by installing the tension rod into the pre-drilled hole with the provided adhesive. You will then need to remove the threaded rod from the bottom hole of the AHWS unit.



2 Install the remaining components to the bottom post in this order: Steel Washer, Conical spring, Washer, thread cap (smooth surface facing toward the end of the rod), thread cap (smooth surface facing toward the first thread cap), Large washer, spacer, washer, locking knob.



3 Once you're ready to wrap, just add up to four spools of thread between the two Ball Bearing centered Thread Caps and begin wrapping. The AHWS is designed to retain all functionality that is originally found on a stock HWS-1.



4 Now mount two of the Rod Stands to the AHWS Base. Align the rear hole on the rod stand with the bottom slot on the AHWS Base and slide a Rod Stand Bolt through both pieces. Secure by installing a steel washer, conical spring, washer, and locking knob in that order starting from the base.

WITH THE COMBINATION OF CONICAL SPRING TENSION, THE SOLID GLASS TENSION ROD, AND THE BALL BEARING SPOOL CAPS, YOU WILL HAVE THE MOST ADVANCED THREAD TENSIONING DEVICE AVAILABLE!

CRBPRODUCTS.COM